

# **SUPERHEAT SOLUTIONS LIMITED**

## **COMPANY PROFILE**



Kinondoni Mkwajuni, Mkunguni B Street  
House No 02  
Dar es salaam, Tanzania  
Contacts - 0710079846/0627659846  
Email- [Info@Superheat.Co.tz](mailto:Info@Superheat.Co.tz)

To whom it may concern:

**Superheat solutions limited** is a Tanzania based company that takes pride in providing high quality service throughout the country

Our affordable service include customized design, installation , customized preventative maintenance and service for our client in numerous industries. These include automobile dealerships, restaurant manufacturing plants office environment and apartment complexes.

We offer complete , expert service for maintaining, installation, repairing and system expansion on your air condition and heating system. We also perform air conditioning and heating conversions to achieves high—energy efficiency.

**Superheat solutions limited** employees receive the late soft state the art training and certifications, and our company philosophy ensures that you will be happy with workmanship and services level that we are know for delivering. All our staff have also been inducted and trained in compliance with the work place health and safety act procedures. This is reiterated in our health and safety check form provided on every air conditioning related service.

In addition to **superheat solutions limited** quality service , the company is renowned for its reliability and availability. You can contact us for emergency service , quotation , or simply to answer your question about refrigeration and air conditioning.

Let refrigeration and conditioning provide the comfort and quality that your business deserves. We look forward to the opportunity of providing services to your company in the near future.

Kind regards

Ibrahim H. mzee  
Managing director,  
**Superheat solutions limited**

## Our mission

**Superheat solutions limited** aim to design , install, service and maintaining cost effective customized modern refrigeration and air conditioning services to all our client at affordable prices.

## Our vision

The company's long– term vision is to be more creative , understanding , and more customer's focused this developing a long and health working relationship.

## Our Goals

**Superheat solutions limited** target to be an exceptional company giving our client quality affordable service customized and tailored to suit their diverse needs.

## Core Values

- . Performances
- . Responsibility
- . Innovation
- . Customer care
- . Quality services

## Product & services

**Superheat solutions limited** offers a large range of choice for air conditioning / heating and refrigeration units to satisfy every customer's needs. These includes reputable and reliable world—wide brands such as carrier, Panasonic and fujitsu. Further more, **superheat solutions limited** provides a unique service that ensures your system operates at peak efficiency , in both energy management and in system performance.

## Commercial system

### Cooling and heating systems

From unitary product to applied system , **superheat solutions limited** Offers a comprehensive line of commercial HVAC system and service for Offices buildings, manufacturing retail school and universities.

### Accommodation Air Conditioning

**superheat solutions limited** accommodation products and preventative maintenance services offer a complete heating / cooling solutions for hotels, senior living centres and apartment buildings.

## Refrigeration

From refrigeration display cases to bottle cooler and cold rooms, **superheat solutions limited** offer an array of commercial refrigeration product and services.

## Preventative Maintenance Agreements

**superheat solutions limited** customized preventative maintenance services is unique to the industry. The maintenance services agreement keeps your system in tip— top shape, and helps prevent unwanted services calls. A preventative maintenance service agreement from **superheat solutions limited** refrigeration and conditioning , will save your money and assure uninterrupted all year round comfort.

Each plan is customized to suit your specific system and unique service needs. Plans are available in

- 1– year ,
- 2– year and
- 3– year options.

## RESIDENTIAL SYSTEM

### Indoor weather systems

**superheat solutions limited** utilizes reputable reliable brand name indoor weather system product for the home , including split system air conditioners, heat pumps, programmable thermostats, humidifiers, air cleaners, ventilator and ducted system . These affordable products comfortable living all year round by allowing you to control the weather to suit you and you family.

### Part and Supplies

**superheat solutions limited** utilizes only the best available parts and supplies for repairing and services air conditioning and refrigeration related products. This ensures that your investment is maintenance well during the duration of the maintenance agreement . In addition, all part are provided with genuine manufactures warranty.

### Qualifications.

- . CFC accredited with department of environment and heritage
- . Workplace health and safety act and Tanzania standard
- . Master builders member
- . OSHA certified
- . CEB member ( air conditioning contractors engineering board)
- . Advanced certificate of thermo - dynamic engineering
- . Quality assurance compliant
- . Mechanical works
- . Ducting fabrication

**superheat solutions limited**

Head office staff

Mon - fri 8.00 am to 4.30 pm excludes public holidays

## AFTER HOURS SERVICES

This is applicable in emergency situations : it will enable you to contact our staff quickly in the event of an breakdowns after working hours.

For immediate attention to you after working hours

Call : + [255 786374318](tel:255786374318) - **Selemani Amanzi** please do not hesitate to use this service should you require attention . Our staff will be very willing to assist and attend to your needs

### Address:

Our location & contact details

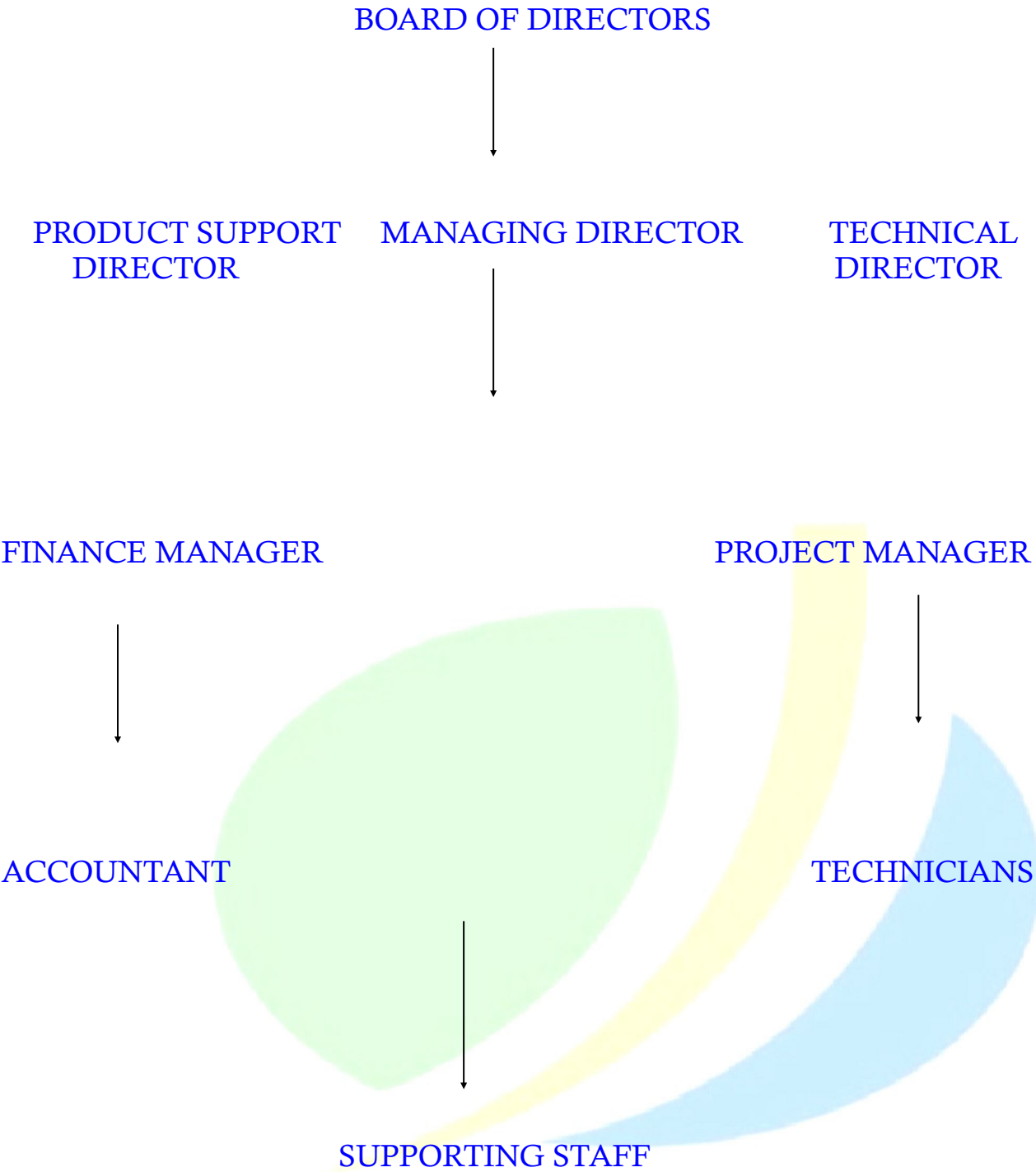
### HEAD OFFICE

[Kinondoni mkwajuni, Mkunguni B street](#)  
[House No 2](#)  
[Dar es salaam](#)  
[Tanzania](#)

Contact to + [255710079846](tel:255710079846)  
+ [255627659846](tel:255627659846)

Email: [info@superheat .co.tz](mailto:info@superheat.co.tz)

ORGANISATION CHART





**superheat solutions limited** is proud to offer the following engineering disciplines as part of its portfolio of services offered to our clients:

- . Refrigeration system design
- . Refrigeration contracting services
- . Refrigeration plant design & manufacture
- . Air conditioning design & installation
- . Ventilation & extraction design and installation
- . Mechanical work, and duct fabrication
- . Planned maintenance provision
- . Electrical installation works & design
- . Electrical compliance and PAT testing
- . Refrigeration commissioning provision

### Refrigeration engineering & contracting

**superheat solutions limited**, provides many engineering solutions, for many differing needs.

With a team of highly skilled design engineering and project delivery managers, no job is too small or complex. The company's design engineering are involved in many aspect of projects from the initial conceptual discussion, right through to the final sign off. **superheat solution limited** can look at the noise implication of project in a way that allows this key information to be provided to the design and manufacturing team to ensure adherence to the noise report as stipulated by any local authority.

**superheat solutions limited** has vast experience in project from 50,000 sq/ft superstores, high rise offices facilities down to very small convenience stores.

**superheat solutions limited** will provide all necessary health & safety information at project start date, appoint a project manager if required by the contact, provide all RAMS associated with the works and, at the end of the installation, issue all commissioning documentation with fitted drawings and O&M manuals as required.

**superheat solutions limited** design team includes qualified computer aided draughtsman to look at design, create working and 'as fitted' drawings and to provide layout and isometric drawing as may be required by the project in hand.





### Air conditioning

**superheat solutions limited** has extensive experience and knowledge of all types of air conditioning systems, from single and multiple split system to ducted air handlers and VRF/VRV installations.

Our team of in - house air conditioning expert provide key project solution to enable fast , effective and reliable installation of any design requirement.

From the initial concept, whether provided by the client or taken from a site survey, our design team will formulated the very solution for the application . The creation of CAD drawing along with full design information allows our specialist installation teams to deliver a project to the exacting needs of the end user. With an acute focus on commissioning of the system, we are proud to handover fully completed installation on time and within budget.

The designated project manager will provide all required information from a health & safety perspective, ensuring that the project is delivered with minimum disruption to the owners and occupiers of the property.

All of our installation and service teams have been training to the highest standard ensure compliance with the original manufacturers install and warranty expectation.



### Reactive service & Planned Maintenance

**superheat solutions limited** provides a 24/7 emergency, Breakdown service, offering clients up to a 4-hour response from the time of call receipt the engineering teams are all operating from **superheat solutions limited** branded vehicles that carry all essential tools and generic spares. This enables engineering to work to the very best of their ability whilst meeting the requirement of the customer's contract.

**superheat solutions limited** has recently implemented the use of electronic job sheets for the management of the day today calls, allowing the engineering to reduce time spent completing paper work and other administrative tasks.

Planned maintenance regimes are managed by the serviced department and dates for all types of PPM are agreed through communication direct with the client. Our dedicated PPM engineering complete all identified visual and physical checks has required by the individual piece of equipment The flexible approach of the department allows for any ' adjustment' to the client's needs should they a rise.

### Electrical Engineering & Maintenance

**superheat solutions limited** provides an emergency break down and repair service for all identified electrical issues. The department has grown over the year to offer installation works, reactive repair ( via the service department ) and compliance testing has detailed below . Fixed wire testing.

**superheat solutions limited** provides fixed electrical installation inspection with our fully qualified electrical test engineers. The team provides comprehensive reports, including any recommendation and budget estimated for any necessary remedial works.

### Portable Appliance Testing (PAT)

**superheat solutions limited** PAT test engineers are here to help businesses meet the legal responsibility placed up on them by the electricity at work regulation under which all employers must take practical steps to ensure no danger result from the use of any electrical appliances . Regular inspection , testing and maintenance of all electrical equipment is essential.

#### Report include:

- . A record of each asset tested
- . Full test result
- . Listing of any failed items.
- . PAT test certificate
- . Free replacement of faulty fuses

### Thermographic diagnostics

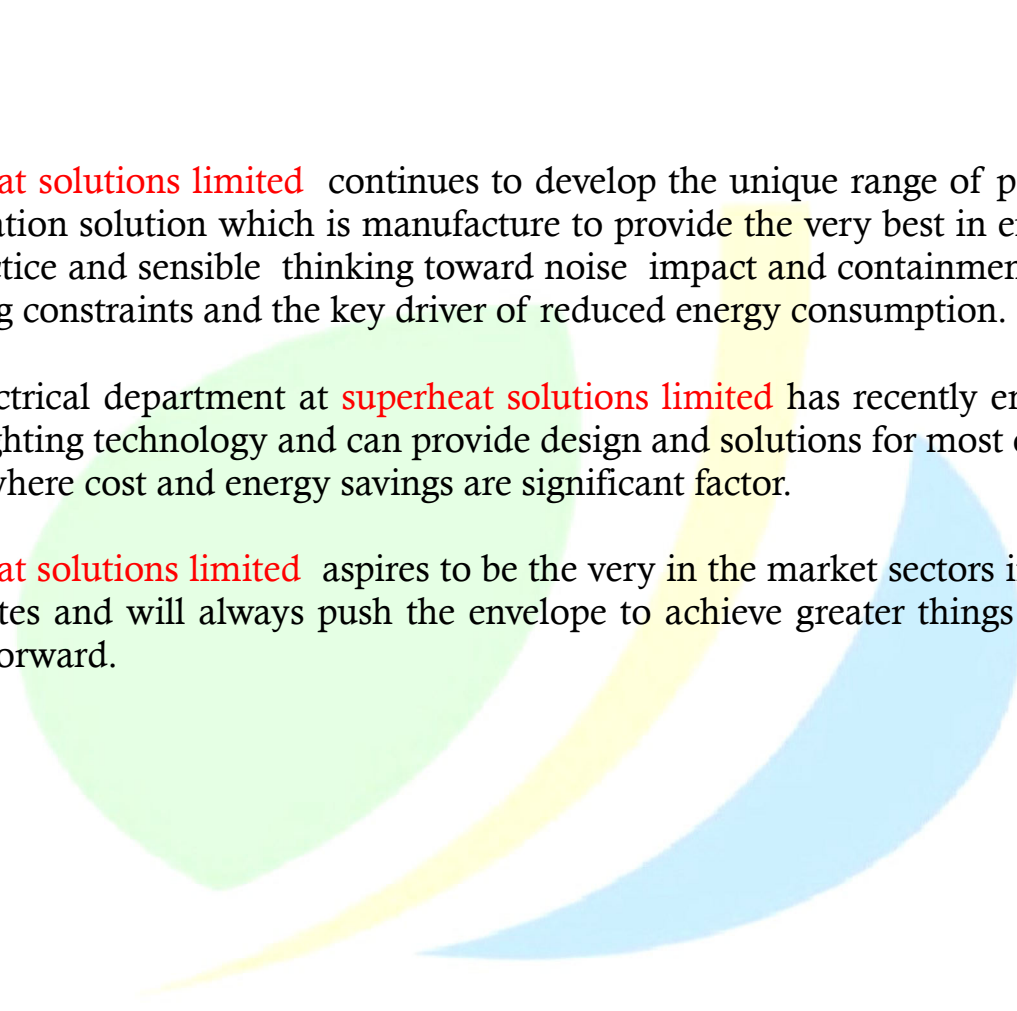
Thermographic image surveys offer non– intrusive, planned and protective Maintenance and are extremely effective for early detection of anomalies. Any areas of elevated temperature can be identified via an infrared picture providing a cost effective of meeting HSE and insurance requirement as well as allowing businesses to take steps to avoid unplanned maintenance shut downs.





## Personnel

Most important part of any business is its staff. From the very early days of the company, **superheat solutions limited** employed staff not just on the basis of meeting the needs of day to day demand of business but with vision and for foresight, **superheat solutions limited** employed staff which allowed business to expand in a controlled manner. **superheat solutions limited** is proud to have grown business in this way and , in turn it has allowed staff, to grow and flourish with the business.



**superheat solutions limited** continues to develop the unique range of packaged refrigeration solution which is manufacture to provide the very best in engineering practice and sensible thinking toward noise impact and containment, space planning constraints and the key driver of reduced energy consumption.

The electrical department at **superheat solutions limited** has recently embraced LED lighting technology and can provide design and solutions for most environments where cost and energy savings are significant factor.

**superheat solutions limited** aspires to be the very in the market sectors in which it operates and will always push the envelope to achieve greater things as time moves forward.

**Superheat solution limited** is proud of its commitment to training and ongoing career advancement with a matrix kept to monitor courses taken and qualification achieved by staff at all levels of the business

**Superheat solutions limited** has a very simple operational structure meaning that super heat solution limited can make decisions in a timely fashion so operationally any possible delays are kept to an absolute minimum allowing the focus to remain family on the job at hand and more important to deliver the completed project to the client on the within budget and to a very high standard

### **Company safety Committee**

The safety committee will administer the company Health safety and welfare policy

#### **The safety committee function is to:**

Administer and co-ordinate Health safety and welfare activities in accordance with the company activities

.Advice and managers on all health safety and welfare matters together with recommendations on new and charging legislation which may affect their operation activities.

Consider all Health safety and welfare matter that have been reported to the safety committee

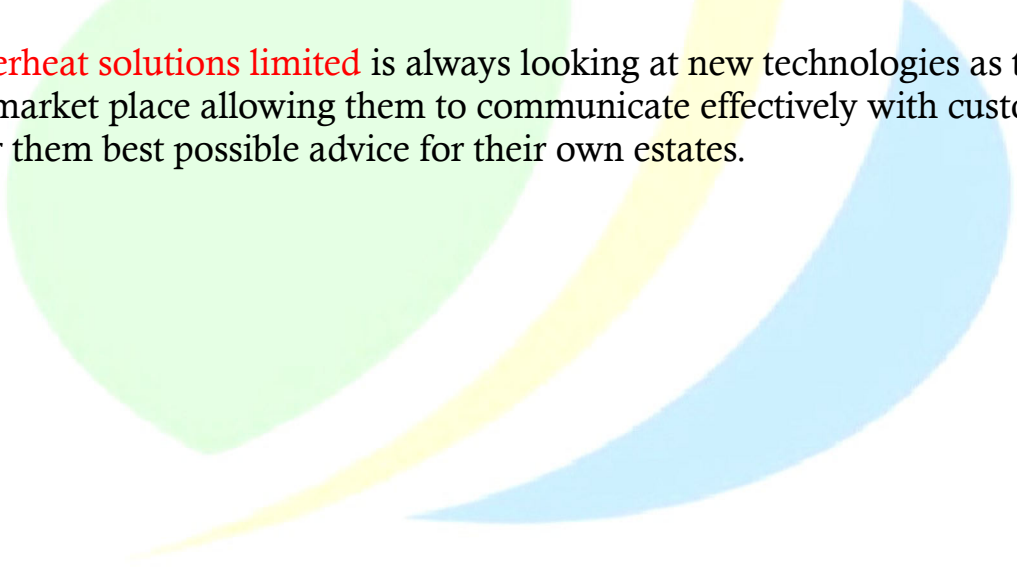
#### **The safety committee will consist of:**

- .works manager /site Engineer
- .supervisors
- .safety officer
- .workers Representative

## Future Developments

**Superheat solutions limited** is very proud of its heritage and of the customers who have enjoyed the services and skills that the company has provided to them over the years **superheat solutions limited** has an extremely focused attitude towards the future and that is reflected in its commitment to developing skills within the business to shadow changes within the market place this has allowed the business to stay one step a head with regard to refrigeration changes Gas regulations and other industry related developments.

**Superheat solutions limited** is always looking at new technologies as they enter the market place allowing them to communicate effectively with customers and offer them best possible advice for their own estates.





**Superheat solution limited** continues to develop the unique range of refrigeration solutions which it manufactures to provide the very best in engineering and sensible thinking towards noise impact and containment space planning constraints and the key driver of reduced energy consumption.

The electrical department at **superheat solutions limited** has recently embraced LED technology and can provide designs and solutions for most environments where cost and energy savings are a significant factor

**Superheat solution limited** aspires to be the in the market sectors in which it operates and will always push the envelope to achieve greater things as time moves forwards

